

Informed Decision Making Conference

Moving from Data to Insight and on to Action

Roy Stripling

Director, Student Success Dashboard Research Initiatives

rstripling@calstate.edu

May 5, 2017

Graduation Initiative 2025

Guiding Principles:

- Sustain commitment to our high level of academic rigor
- Continue to provide access to opportunity
- Meet students where they are, while helping them to graduate in a timely manner
- Set goals that are ambitious, challenging, and realistic

www.calstate.edu/dashboard

The dashboard is titled "CSU Student Success Dashboard" and is designed for faculty. It features a navigation menu on the left with categories like Predictive Analytics, Interactive Visualizations, Historical Trends, and Custom Reports. The main content area is divided into several sections:

- New to the dashboard?** A blue banner with a "Close" button and a link to the "Dashboard Start Guide".
- Campus Trends and Opportunities**: A section with two key metrics:
 - Achievement Gap**: 12.9. Description: "The average gap between CSU System URM and non-URM freshman 6-year graduation rates is 12.9 percentage points." Button: "Explore the Data".
 - Demographics**: 12%. Description: "The number of CSU System underrepresented minority freshmen increased by 12% over the last 5 years." Button: "Explore the Data".
- Faculty**: A central section with a video player and text: "Faculty play a critical role in fostering student success in and out of the classroom. This dashboard is intended to help you gain a better understanding of the backgrounds and academic patterns of your students. Our hope is that, with the information provided, you will be better able to engage in productive discussions and planning with all stakeholders who hold a vested interest in promoting student success." Below the video is a play button and the text "Hear how faculty use the dashboard".
- As you review the contents of this report, consider asking yourself...**: A section with six interactive charts:
 - Who Are My Students?**: A donut chart showing student demographics.
 - How Quickly Do They Progress Toward Degree?**: A scatter plot showing time to degree.
 - What Paths Do They Follow?**: A line chart showing various academic paths.
 - In Which Courses Do They Struggle?**: A bubble chart showing course-level struggles.
 - Are There Achievement Gaps Between Certain Groups?**: A bar chart comparing achievement across groups.
 - What Are Their Academic Outcomes?**: A table comparing major and campus-wide outcomes:

Category	4 year	6 year
Major	21.3%	53.4%
Campus-wide	23.7%	57.7%
- And most importantly ...**: A section with a video player and the text "What Actions Can I Take?". Below the video is a play button and the text "Explore the Data".

Live in Dashboard

Channel Islands

Chico

Dominguez Hills

East Bay

Fullerton

Long Beach

Los Angeles

Monterey Bay

Northridge

Pomona

San Diego

San Francisco

San Jose

Sonoma

Stanislaus

In Process

Bakersfield

Fresno

Humboldt

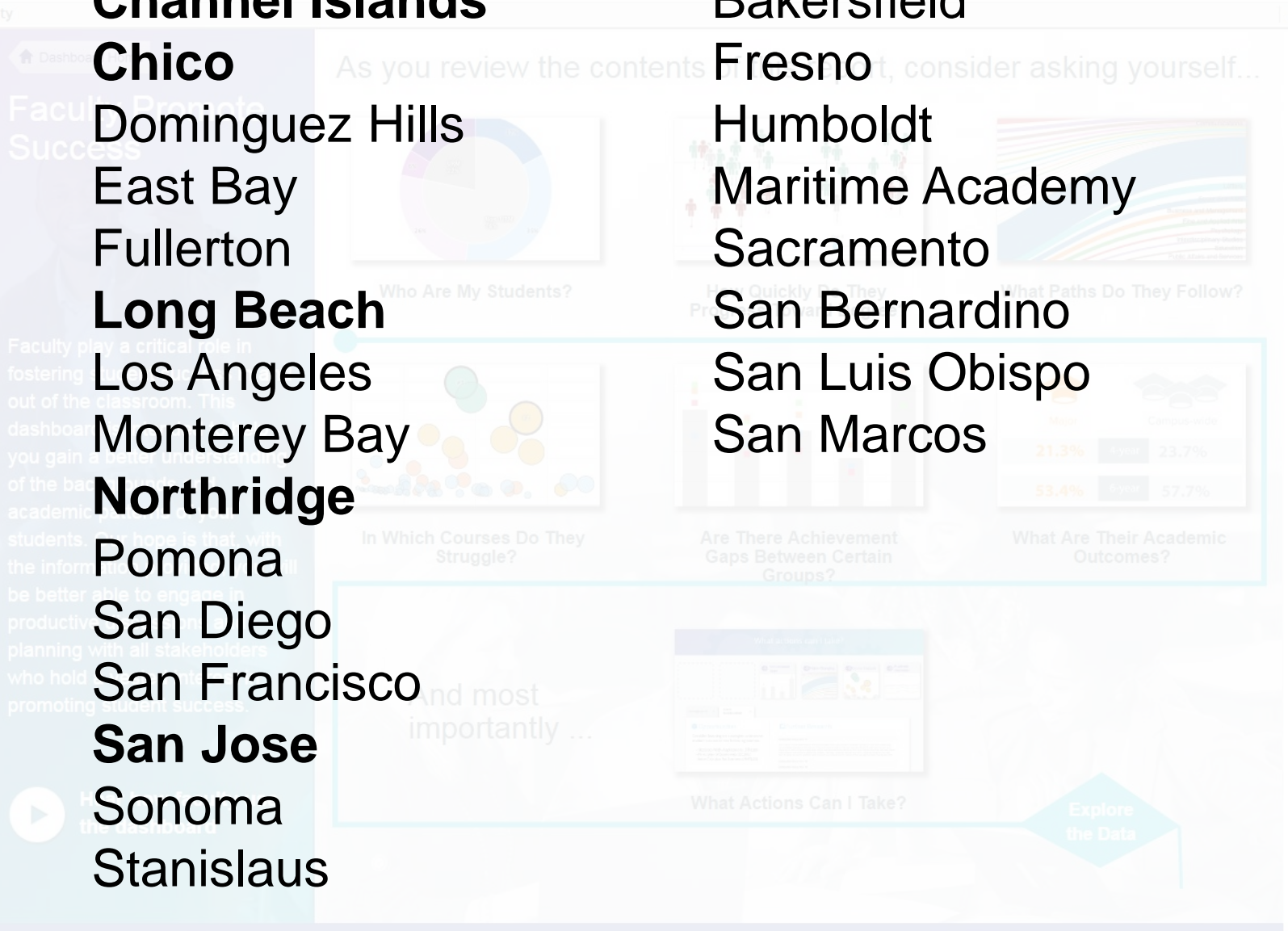
Maritime Academy

Sacramento

San Bernardino

San Luis Obispo

San Marcos





CSU Student Success

www.calstate.edu/dashboard

www.calstate.edu/dashboard

The screenshot displays the CSU Student Success Dashboard interface. On the left, a navigation sidebar includes sections for Predictive Analytics, Interactive Visualizations, Historical Trends, and Custom Reports. The main content area features a 'New to the dashboard?' notification and a 'Faculty Promote Success' report. The report includes a video player, a text introduction, and several data visualizations such as a pie chart for 'Who Are My Students?', a scatter plot for 'How Quickly Do They Progress Toward Degree?', and a bar chart for 'What Are Their Academic Outcomes?'. A 'Faculty' section highlights 'Campus Trends and Opportunities' with metrics for Achievement Gap (12.9) and Demographics (12%).

CSU Student Success Dashboard

New to the dashboard? View the [Dashboard Start Guide](#) for a quick tutorial on usage tips and key dashboard features. [Close](#)

California State University

The CSU Student Success Dashboard is an interactive data presentation tool that explores key student progress indicators across the CSU. The dashboard aims to drive campus conversations about what's working well, and what needs to improve student success.

Campus Trends and Opportunities

Achievement Gap
12.9
The average gap between CSU System URM and non-URM freshman 6-year graduation rates is 12.9 percentage points. [Explore the Data](#)

Demographics
12%
The number of CSU System underrepresented minority freshmen increased by 12% over the last 5 years. [Explore the Data](#)

Faculty

Faculty Promote Success

Faculty play a critical role in fostering student success in and out of the classroom. This dashboard is intended to help you gain a better understanding of the backgrounds and academic patterns of your students. Our hope is that, with the information provided, you will be better able to engage in productive discussions and planning with all stakeholders who hold a vested interest in promoting student success.

[Hear how faculty use the dashboard](#)

As you review the contents of this report, consider asking yourself...

- Who Are My Students?** (Pie chart)
- How Quickly Do They Progress Toward Degree?** (Scatter plot)
- What Paths Do They Follow?** (Line chart)
- In Which Courses Do They Struggle?** (Bubble chart)
- Are There Achievement Gaps Between Certain Groups?** (Bar chart)
- What Are Their Academic Outcomes?** (Table)

Major	4 year	6 year	Campus-wide
	21.3%	23.7%	
	53.4%	57.7%	

What Actions Can I Take? [Explore the Data](#)

In Which Courses Do They Struggle?

Instructions

- 👉 Hover mouse over bubbles to reveal the course information
- 📌 Click on the legend to toggle series on and off
- 🔍 Click on the chart and drag your mouse to zoom in

Opportunity: All Departments

Long Beach

The following courses have the most students with non-passing grades for All Departments at Long Beach campus:

1. Precalculus Algebra (MATH113)
2. Statistics For Everyday Life (STAT108)
3. Calculus For Business (MATH115)

Long Beach > College of Natural Sciences & M > All Departments > All Academic

Course Grade Bottlenecks for All Freshman, Transfer, and Graduate Students

Non-Passing Grades Chart

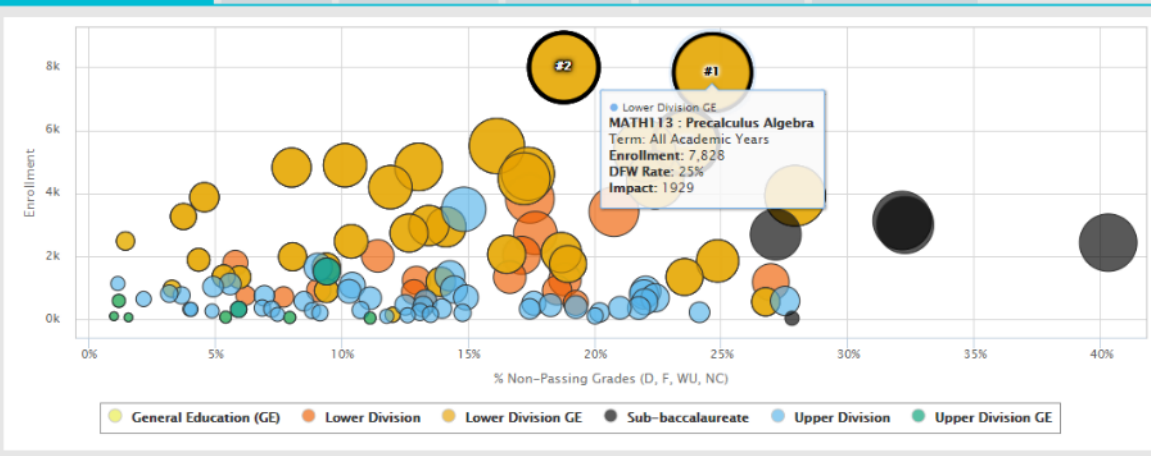
Data Table

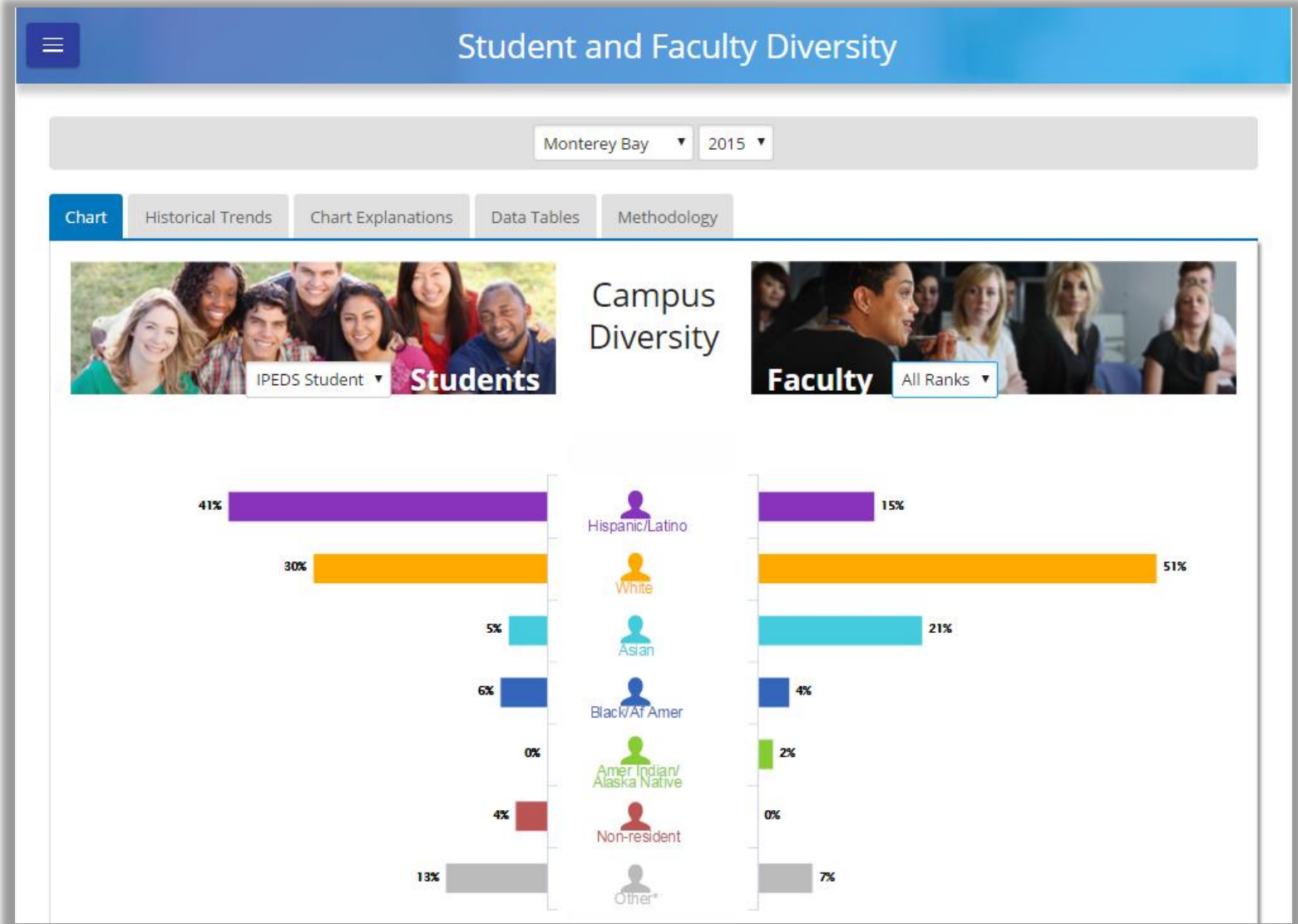
Chart Explanation

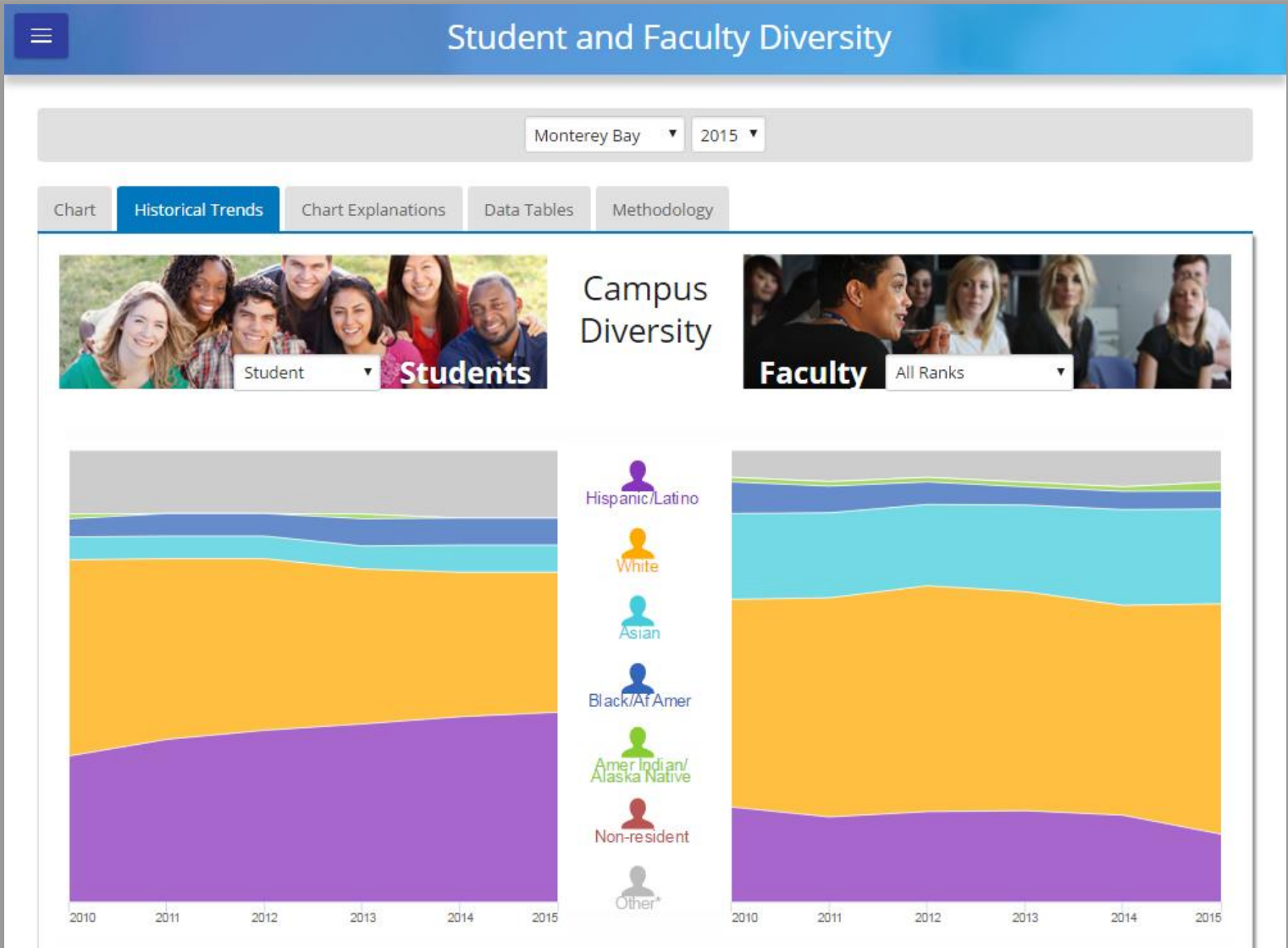
Methodology

Applying This Data

Further Resources



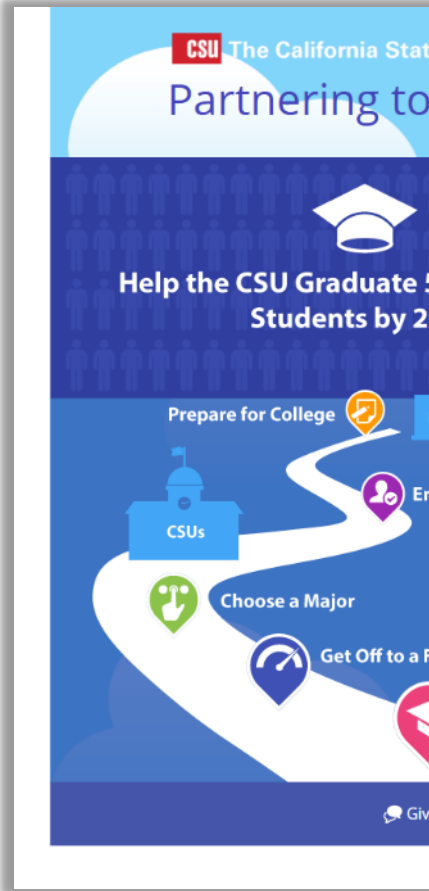




Discussion

- What experiences have you had using the CSU dashboard in driving evidence-based discussions?
- What role should the System play?
 - System Support?
 - CSU Dashboard?





CSU The California State University **High School Success**
Partnering to Prepare Our Students for Success

Back to Search San Bernardino High

Prepare for College
How many students completed the CSU math and English proficiency requirements before entry?

Enroll at a CSU
How many enrolled at a CSU campus?

Choose a Major
How many students declared a major upon arrival at the CSU?

Quick Fact
More Data
Actions

26%

Over the past three years, 26% of CSU-bound San Bernardino High students were college-ready in English and math.

Quick Fact
More Data
Actions

Over the past three years, an average of 38 San Bernardino High students enrolled at a CSU campus.

Year	Average Number of Students
2012	28
2013	37
2014	49

Quick Fact
More Data
Actions

Over the past three years, an average of 89% of San Bernardino High students declared a major at the time of enrollment.

Category	Percentage
Declared	89%
Undeclared	11%